

MORTGAGEE'S CONSENT
STATE OF FLORIDA
COUNTY OF PALM BEACH

THE UNDERSIGNED HEREBY CERTIFIES THAT IT IS THE HOLDER OF MORTGAGE UPON THE PROPERTY DESCRIBED HEREON AND BY JOINT AND SEVERAL CONSENT TO THE DEDICATION OF THE LAND DESCRIBED IN THIS INSTRUMENT TO THE PUBLIC RECORDS OF PALM BEACH COUNTY, FLORIDA, SHALL BE SUBMITTED TO THE DEDICATION

THE SAID CORPORATION HAS CAUSED THESE PRESENTS TO BE SIGNED BY ITS VICE-PRESIDENT AND ITS SECRETARY AND ITS CORPORATE SEAL TO BE AFFIXED HEREON BY AND WITH THE AUTHORITY OF THE DIRECTORS THIS 4th DAY OF JUNE, 1980.

ATTEST: *Kenneth S. Hoffman*
KENNETH S. HOFFMAN, SECRETARY
BY: *Stuart Steinberg*
STUART STEINBERG, VICE PRESIDENT

ACKNOWLEDGMENT
STATE OF FLORIDA
COUNTY OF PALM BEACH
BEFORE ME PERSONALLY APPEARED *Kenneth S. Hoffman* and *Stuart Steinberg* TO ME WELL KNOWN, AND KNOWN TO ME TO BE THE INDIVIDUALS DESCRIBED IN AND WHO EXECUTED THE FOREGOING INSTRUMENT AS SECRETARY AND VICE PRESIDENT OF THE BISCAYNE FEDERAL SAVINGS & LOAN ASSOCIATION, A CORPORATION, AND SEVERALLY ACKNOWLEDGED TO AND BEFORE ME THAT THEY EXECUTED SUCH INSTRUMENT AS SUCH OFFICERS OF SAID CORPORATION, AND THAT THE SEAL AFFIXED TO THE FOREGOING INSTRUMENT IS THE CORPORATE SEAL OF SAID CORPORATION AND THAT IT WAS AFFIXED TO SAID INSTRUMENT BY DUE AND REGULAR CORPORATE AUTHORITY, AND THAT SAID INSTRUMENT IS THE FREE ACT AND DEED OF SAID CORPORATION.

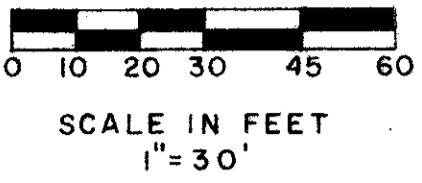
WITNESS MY HAND AND OFFICIAL SEAL THIS 9th DAY OF JUNE, 1980.
Quana M. Sanchez
NOTARY PUBLIC

MY COMMISSION EXPIRES: MARCH 15, 1982

THE VILLAS OF SANDALFOOT

A PARCEL OF LAND BEING A REPLAT OF PORTIONS OF TRACTS 34, 35, 36, 50, 51, AND 52, ALL IN BLOCK 81, PALM BEACH FARMS COMPANY PLAT NO. 3, AS RECORDED IN PLAT BOOK 2, AT PAGE 53 OF THE PUBLIC RECORDS OF PALM BEACH COUNTY, FLORIDA, LYING IN SECTION 30, TOWNSHIP 47S, RANGE 42E, PALM BEACH COUNTY, FLORIDA.

APRIL, 1981
SHEET 2 OF 3

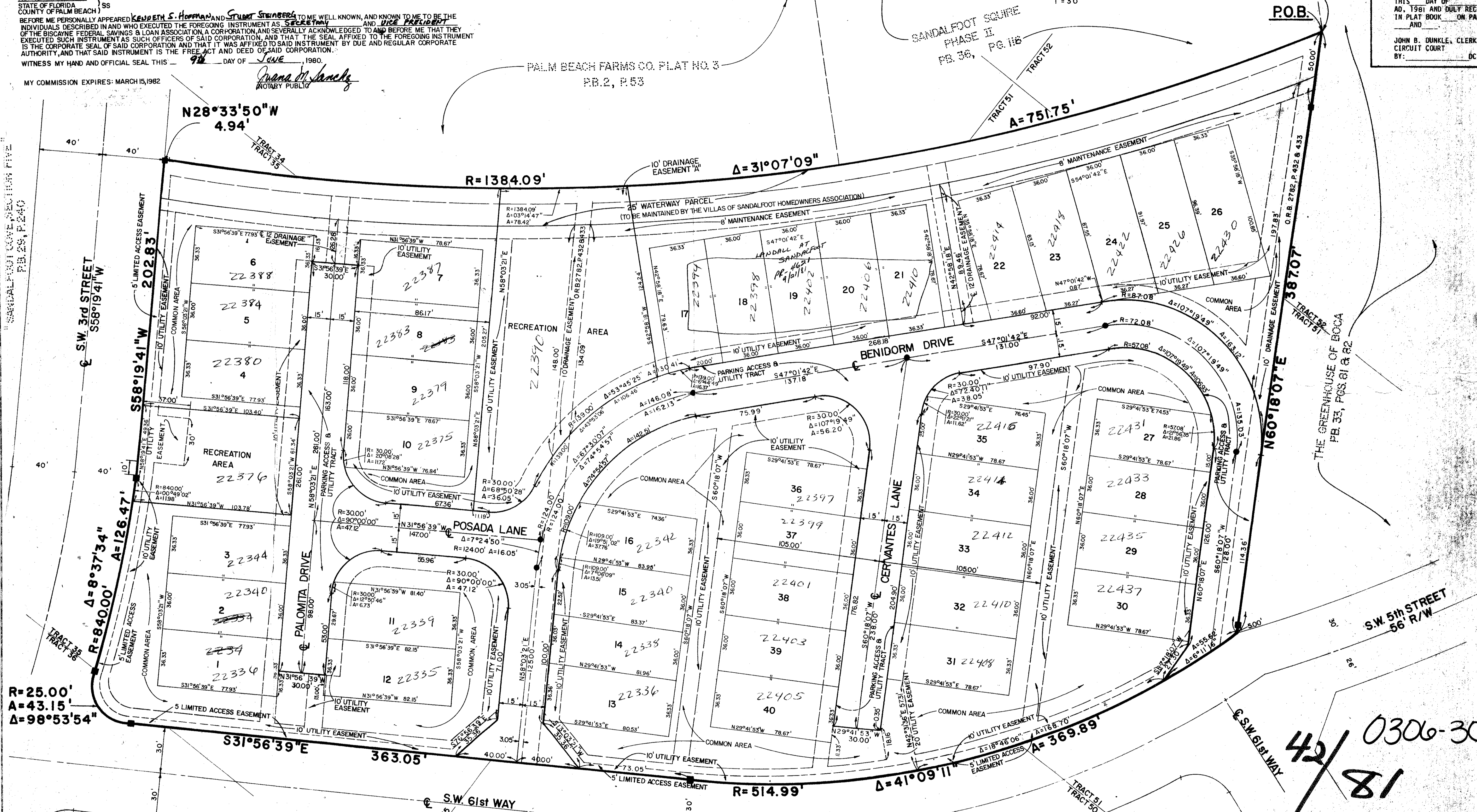


SOUTHERLY CORNER
SANDALFOOT SQUIRE
PHASE II, PB. 36, PG. 116

81

STATE OF FLORIDA
COUNTY OF PALM BEACH
THIS PLAT WAS FILED FOR
RECORD AT
THIS DAY OF
AD, 1981 AND DULY RECORDED
IN PLAT BOOK ON PAGES
AND
JOHN B. DUNKLE, CLERK
CIRCUIT COURT
BY: _____ DC.

42/81



42/81 0306-301

PALM BEACH FARMS CO. PLAT NO. 3
PB. 2, P. 53

(FREIDMAN ROAD
OR B 2782, P 427 & 428)
SEE 200' SCALE

VALLHALA VILLAGE
PB. 39, P. 18

Meridian
Surveying and mapping inc.
2328 So. Congress Ave.
Suite A
West Palm Beach, Florida 33406

THE VILLAS OF SANDALFOOT

DATE: APRIL, 1981
DRAWN BY: M.E.H.
CHECKED BY: C.H.C.
SCALE: 1" = 30'